

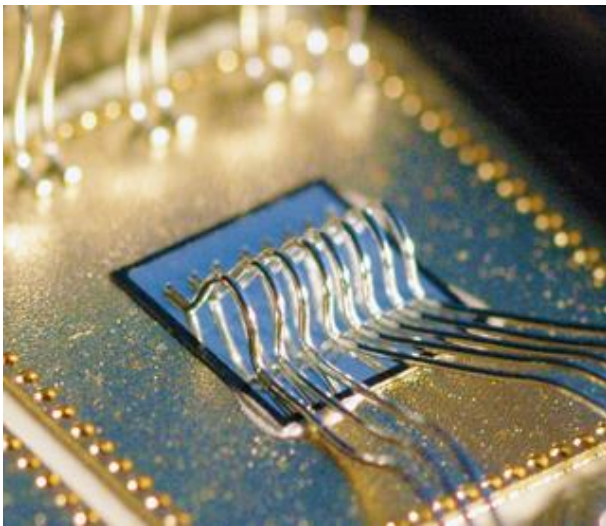
# Polytec EC 242-frozen

## Properties

Polytec EC 242-frozen is a one-component, solvent-free, pre-mixed frozen, silver filled epoxy resin with a long pot life and excellent electrical, as well as thermal conductivity.

Polytec EC 242-frozen is suggested for circuitry, packaging and substrate bonding in power electronics, photovoltaic, and hybrid microelectronic applications.

The material can be applied by dispensing or manually.



## Processing

- The cooling during transport is assured by dry ice (-78 °C) and a temperature indicator.
- Use insulated gloves when touching any component of the packaging.
- The storage temperature of frozen adhesives should not exceed -40 °C.
- The cartridges should be opened only when they have been brought to room temperature (thawing curve see page 3).
- Store cartridges in vertical position while thawing (top down).
- Do not accelerate the thawing by hand heat or warm water (risk of air inclusions)
- Please remove condensed water before opening.
- Surfaces should be clean, thus free of dirt, grease, oil, dust or process chemicals.
- Please notice respective minimum curing temperature and time.
- For Safety information please refer to the respective Material Safety Data Sheet.

# Polytec EC 242-frozen

## Electrically Conductive Adhesive

### Technical Data

# Polytec EC 242-frozen

Properties in uncured state	Method	Unit	Technical Data
Chemical basis	-	-	Epoxy
No. of components	-	-	1
Mixing ratio (weight)	-	-	-
Mixing ratio (volume)	-	-	-
Pot life at 23°C	TM 702	h	48
Storage Stability at -40°C	TM 701	months	12
Consistency	TM 101	-	Creamy Paste
Density Mix	TM 201.2	g/cm <sup>3</sup>	5.3
Density A-Part	TM 201.2	g/cm <sup>3</sup>	-
Density B-Part	TM 201.2	g/cm <sup>3</sup>	-
Type of filler	-	-	Silver
Max. particle size	-	µm	<30
Viscosity Mix 10 s <sup>-1</sup> at 23°C	TM 202.4	mPa·s	35 000
Viscosity A-Part 84 s <sup>-1</sup> at 23°C	TM 202.1	mPa·s	-
Viscosity B-Part 84 s <sup>-1</sup> at 23°C	TM 202.1	mPa·s	-

Properties in cured* state	Method	Unit	Technical Data
Color	TM 101	-	Silver
Hardness (Shore D)	DIN EN ISO 868	-	90
Temperature resistance continuous	TM 302	°C	-55 / +220
Temperature resistance short term	TM 302	°C	-55 / +320
Degradation Temperature	TM 302	°C	+380
Glass Transition Temperature (T <sub>g</sub> )	TM 501	°C	110
Coefficient of thermal expansion (<T <sub>g</sub> )	ISO 11359-2	ppm	39
Coefficient of thermal expansion (>T <sub>g</sub> )	ISO 11359-2	ppm	109
Thermal conductivity		W/m·K	4.2
Specific volume resistivity	DIN EN ISO 3915	Ω·cm	5· 10 <sup>-5</sup>
Electrical conductivity	DIN EN ISO 3915	S/m	-
Elasticity modulus	TM 605	N/mm <sup>2</sup>	9 000
Tensile Strength	TM 605	N/mm <sup>2</sup>	34
Lap shear strength (Al/Al)	TM 604	N/mm <sup>2</sup>	7.0
Elongation at break	TM 605	%	0.4
Water absorption 24 h, 23°C	TM 301	%	-

\*The above data has been determined with samples cured at 150°C. Please notice, by varying the curing temperature these properties can be influenced to some extend.

# Polytec EC 242-frozen

Curing*	Method	Unit	Technical Data
Minimum curing temperature		°C	95
Curing time at 100°C		min	-
Curing time at 120°C		min	-
Curing time at 150°C		min	5
Curing time at 180°C		s	120

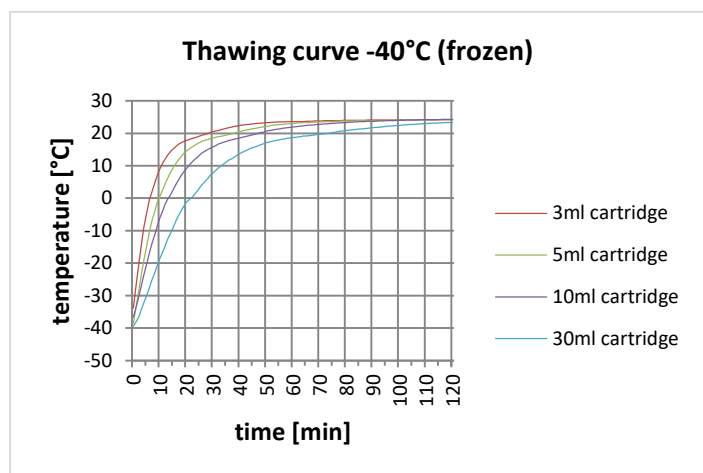
\*Curing temperatures refer to the temperature in the respective bond line. When choosing the respective curing conditions, the time needed to heat the substrate has to be considered. Depending on the type of heat source (convection oven, hot stamp, heating plate) the heat input may vary.

## Standard pack sizes:

3 cc\*/ 14 g, 5 cc\*/ 24 g,  
10 cc\*/50 g, 30 cc\*/ 150 g

## Customized Packaging

\*:EFD-cartridges



## Please note:

The information listed above is typical data based on tests and is believed to be accurate. Polytec PT makes no warranties (expressed or implied) as to their accuracy. The data listed above does not constitute specifications. The processing (particularly the curing conditions) of the material, the process control, and the variety of different applications at various customers are not under Polytec PT's control. Therefore, Polytec PT will not be liable for concrete results in any specific application or in any connection with the use of this product. The curing conditions have a major effect on the properties of the cured material. Therefore, it is highly recommended to keep the curing schedule – once established - under tight control. With the release of this data sheet all former data sheets will be null and void.

Subject to alteration.

Polytec PT GmbH  
Polymere Technologien  
Ettlinger Straße 30  
76307 Karlsbad  
Germany  
Tel. +49 (0) 7243 604-4000  
Fax +49 (0) 7243 604-4200  
info@polytec-pt.de  
www.polytec-pt.de

Polytec PT GmbH  
Polymere Technologien  
plant Maxdorf  
Bahnhofstraße 1  
67133 Maxdorf  
Germany  
info@polytec-pt.de  
www.polytec-pt.de

Polytec France S.A.S.  
TECHNOSUD II  
Bâtiment A  
99, Rue Pierre Semard  
92320 Châtillon - France  
Phone. +33 (0)1 49 65 69 00  
Fax +33 (0)1 57 19 59 60  
info@polytec.fr  
www.polytec-pt.com